



S2: HAND-DRAWN SITE LAYOUT

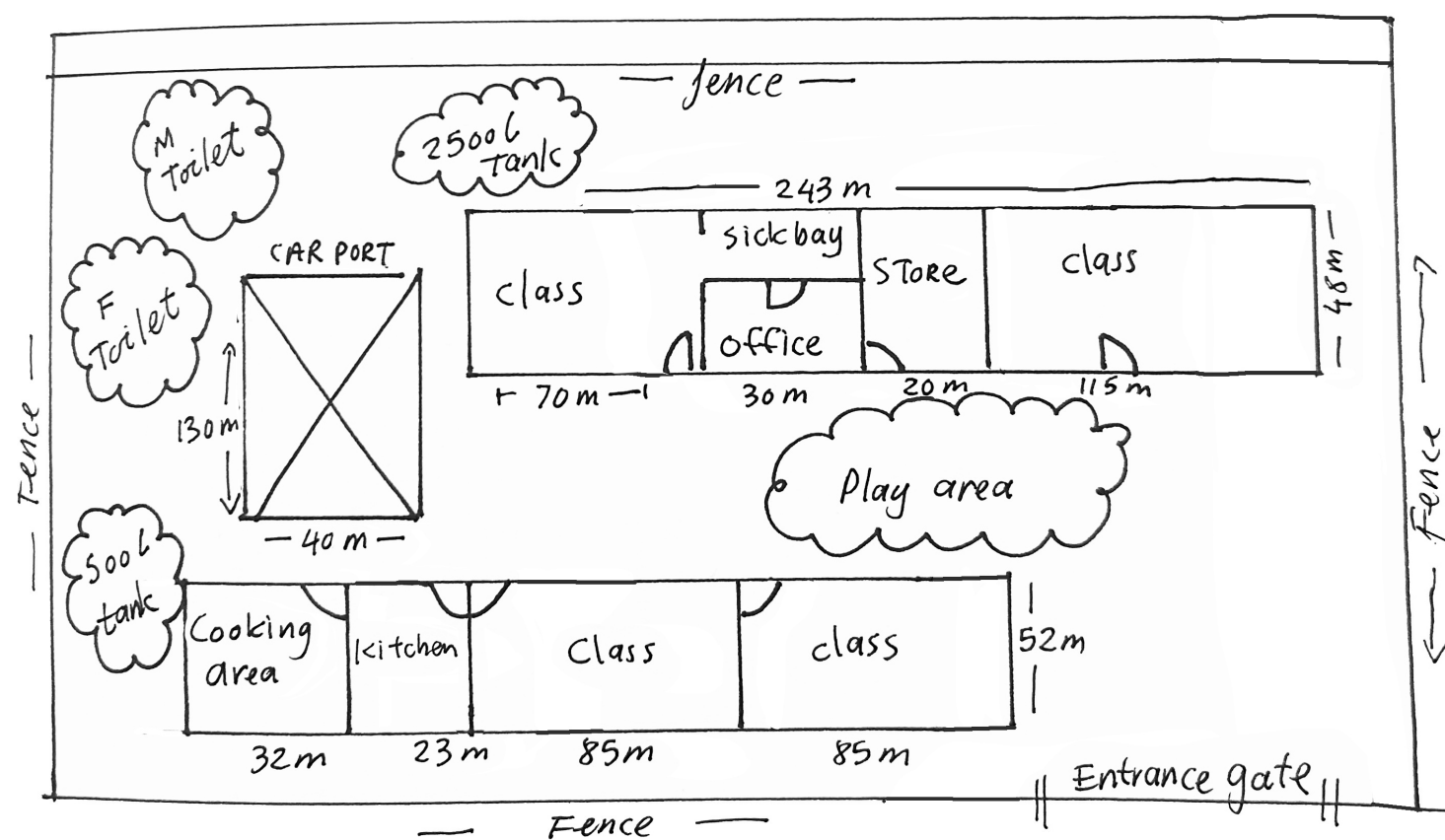
UNDERSTAND WHAT A HAND-DRAWN SITE LAYOUT IS AND HOW TO DRAW IT.

Pretend to be a bird flying over the building where you run your ECD programme. Imagine the building has no roof and make a simple sketch of what you see.



What to include in your drawing:

- Draw the layout of your site as seen from above
- Label rooms (e.g. classroom, kitchen, toilets, play area)
- Add the size of the rooms and features like windows, doors, basins, and outdoor play area



[Click here for access to Hand-Drawn Site Layout template to complete](#)

**HAND-DRAWN SITE
LAYOUT TEMPLATE**